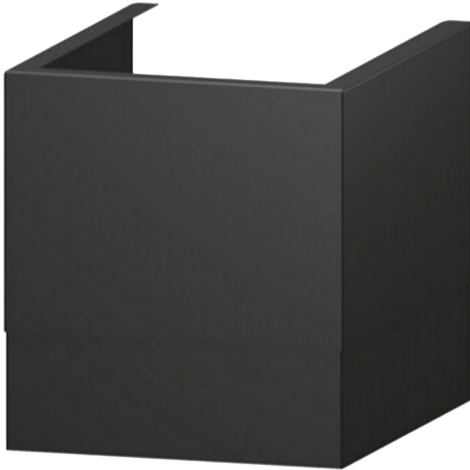


**Chimney extension, 187-360 mm,
Matt black
DWZ1IB6N2**




- Chimney extension 185-362 mm for integrated box hood.
- Two-piece chimney set for an individual height adjustment.
- Installation of the appliance with more than one chimney extension set possible.
- Suitable for ducted and re-circulated extraction
- Easy to clean smooth surfaces and materials.

Technical Data

Dimensions of the packed product (HxWxD):265x350x460 mm
Pallet dimensions: 174.0 x 80.0 x 120.0
Standard number of units per pallet:24
Net weight:2.4 kg
Gross weight: 3.5 kg
EAN code:4242005535156





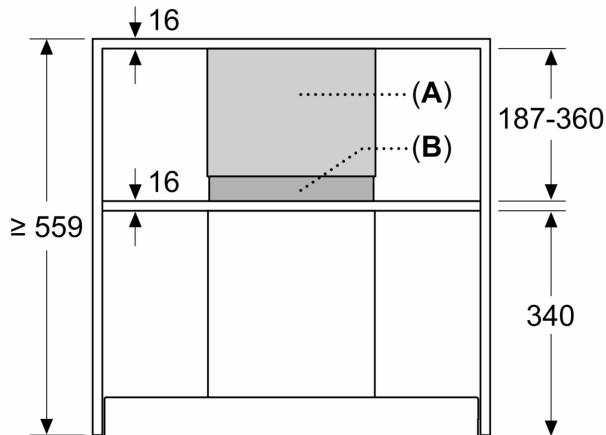
**Chimney extension, 187-360 mm,
Matt black
DWZ1IB6N2**

Optional accessories

- Chimney extension 185-362 mm for integrated box hood.
- Two-piece chimney set for an individual height adjustment.
- Installation of the appliance with more than one chimney extension set possible.
- Suitable for ducted and re-circulated extraction
- Easy to clean smooth surfaces and materials.
- Coated surfaces for less fingerprint sensitivity

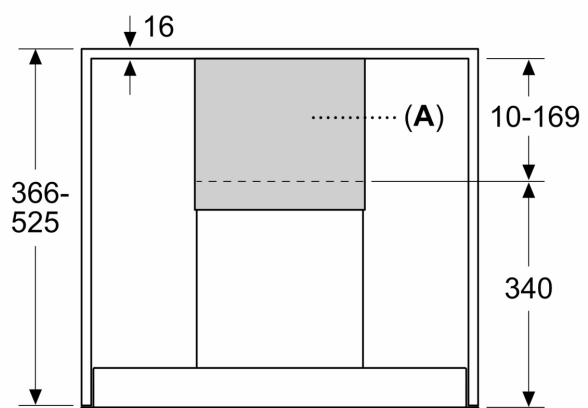
**Chimney extension, 187-360 mm,
Matt black
DWZ1IB6N2**

Measurements in mm
Installation example for cupboard height \geq 559 mm



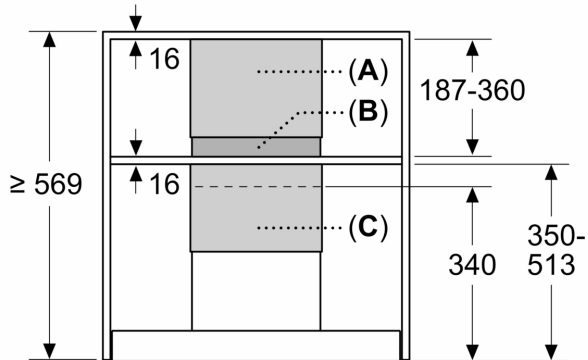
A: Outer channel
B: Inner channel

Measurements in mm
Installation example for cupboard height 366-525 mm



A: Outer channel

Measurements in mm
Installation example for cupboard height \geq 569 mm



Two chimney extension sets required

A: Outer channel for set 1
B: Inner channel for set 1
C: Outer channel for set 2

Measurements in mm

